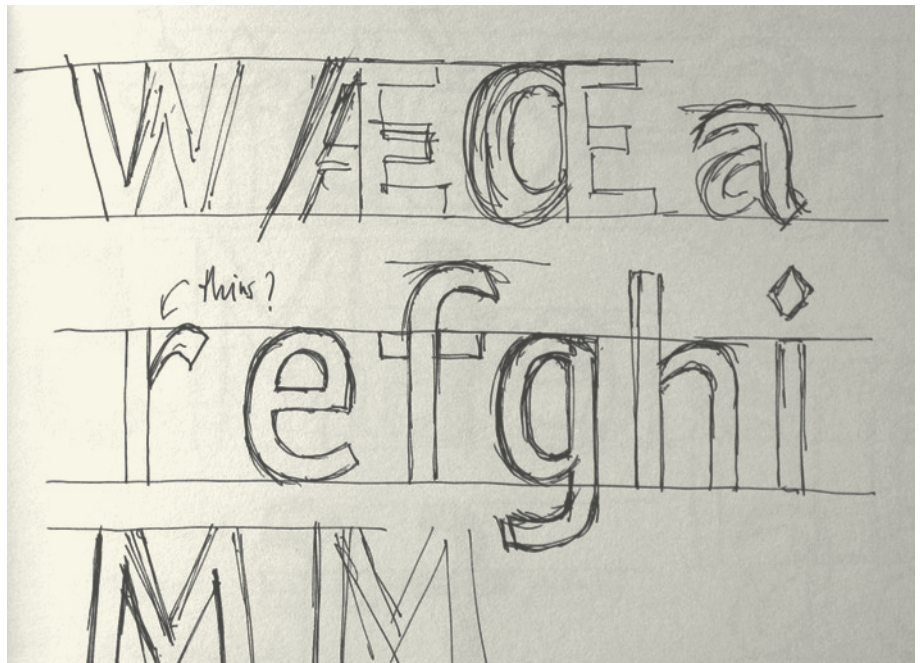


Cover of the Wayfarer sample book



A page from the Wayfarer sketchbook

## New Wayfarer typeface

The Sheffield Sans typeface mentioned in Footnote 04 is now available. Originally developed for a wayfinding system in the city of Sheffield in the UK. The typeface has been expanded to become Wayfarer. As with all our new faces it covers most languages that use the Latin alphabet.

Additions such as small capitals, superiors, oldstyle figures, fractions and arrows make this a highly versatile type. The family of fonts range from Light to Heavy with italics for each weight.

roman & *italic*  
light to **heavy**

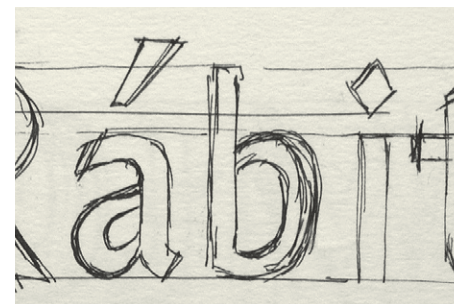
More information and sample PDFs can be found at [www.typography.net/type/wayfarer.htm](http://www.typography.net/type/wayfarer.htm).



Example of the superior small capitals in use

Inspiration for Wayfarer has primarily come from the sans serif fonts of the Sheffield based type foundry Stephenson, Blake & Co. Principally the Granby typeface which echoes the London Underground Typeface of 1916, and the Grotesque range of types from the late 19th century.

The Sheffield Sans typeface has picked up a couple of awards. It was judged best of class in typography in the Spanish LAUS 05 awards and gained a commendation in the Creative Review Type Awards 2005. A PDF about the awards can be found at [www.typography.net/info/Wayfarer\\_awards\\_2005.pdf](http://www.typography.net/info/Wayfarer_awards_2005.pdf).



**á b i**

Sketches and final forms

