

More Bliss

The past few months have been very busy. Hot on the heels of the new Wayfarer™ font (see Footnote 05) we are pleased to announce Bliss™ Pro. Originally released in 1996 as a six weight family, Bliss gained an ExtraLight weight five years later together with an expanded character set to include Central European languages. In 2004 Bliss was upgraded to the OpenType format (please note that this version is still available to licence). So what makes Bliss Pro different from the previous Bliss? Well, in addition to all that Bliss currently offers such as small capitals, alternate figure styles, fractions and a wide selection of accented characters; Bliss Pro now allows for Greek and Cyrillic language setting. We have also taken the opportunity to add alternative fractions and small capital lining figures.

Ha1234567890

Capital height lining figures

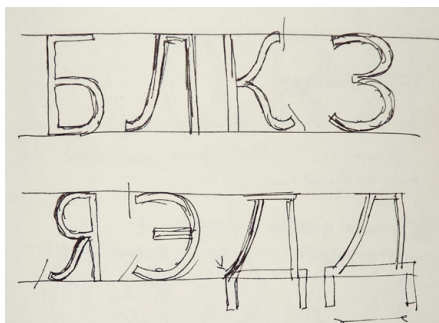
Ha1234567890

Lowercase x-height oldstyle figures

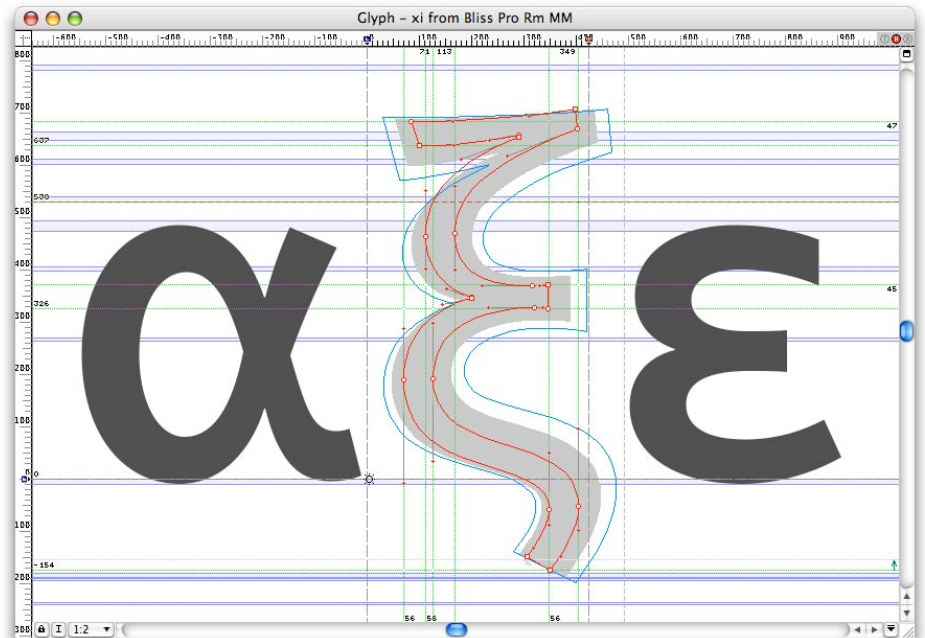
HA1234567890

Small capital lining lining figures

The simplicity and legibility of form, which underpins the design of the original Bliss font was applied to the design of the Greek and Cyrillic. Having begun with the essential underlying structure of each character, these forms were then harmonized and brought together as coherent scripts and then a complete family.



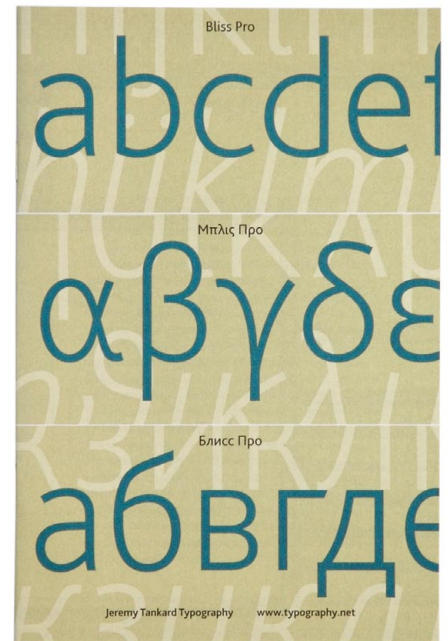
Development sketches for Bliss Cyrillic



Greek lowercase alpha, xi and epsilon

There are upgrade options to Bliss Pro from the previous versions of Bliss, please email or call for more information about this. More information and sample PDFs can be found at www.typography.net/type/blisspro.htm.

Bliss Pro
Μπλις Προ
Блисс Про



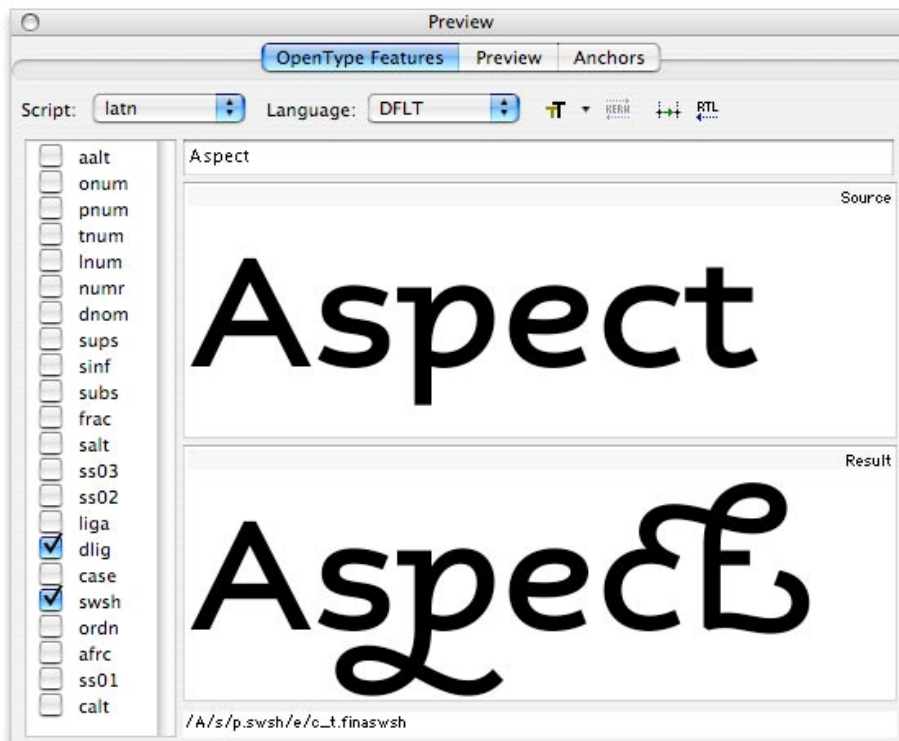
Cover of the Bliss Pro sample booklet

More Aspect

A few weeks after Bliss Pro was completed, an expanded and extended Aspect™ makes its appearance. Expanded in that Aspect now supports the wider collection of languages of Europe that use the Latin alphabet. Extended in that Aspect now boasts two new weights; ExtraBold and Heavy. Old style figures, alternative fractions and a basic collection of symbols have also been added.

Ĉeņĉraĭ ĕŭröpeaņ
Łanğyáğës

Microsoft Office suite of applications are finally due to be released early 2007. These aim to be



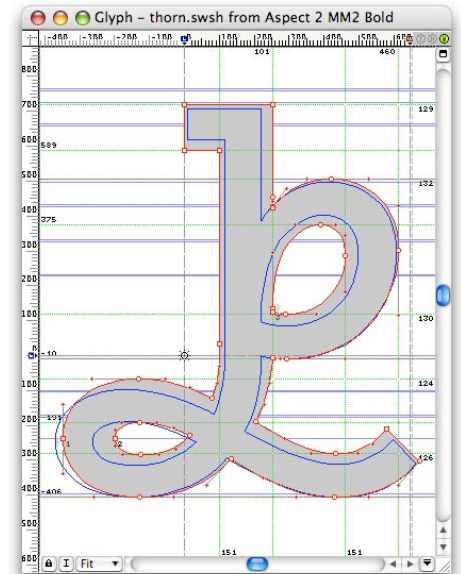
Aspect OpenType features shown in the FontLab application

Aspect was the first typeface that we developed using the OpenType font technology; see Footnote 02 for more information. At the time many of the alternate and swash characters could only be used in Adobe applications. To address this, Aspect was released with 15 support fonts named 'Aspect X'. These fonts allowed access to the additional characters, but at the loss of kerning and ease of use.

Things have not been fast to change since then, but at last Quark XPress 7 is now available. Quark XPress 7 supports the OpenType format and a feature set similar to Adobe InDesign. The next version of Microsoft Windows and the

fully integrated with the OpenType format. As OpenType savvy applications are more readily available and used now, we felt that there was little point in supplying the Aspect X fonts for the updated version of Aspect. Indeed it would be a huge undertaking, and a step backwards, to split the font across all the European languages.

Please contact us for upgrade options to this new version of Aspect. More information and sample PDFs can be found at www.typography.net/type/aspect.htm.



Swash lowercase thorn

Light
Regular
Bold
ExtraBold
Heavy