



The Shire Types

Shires in use

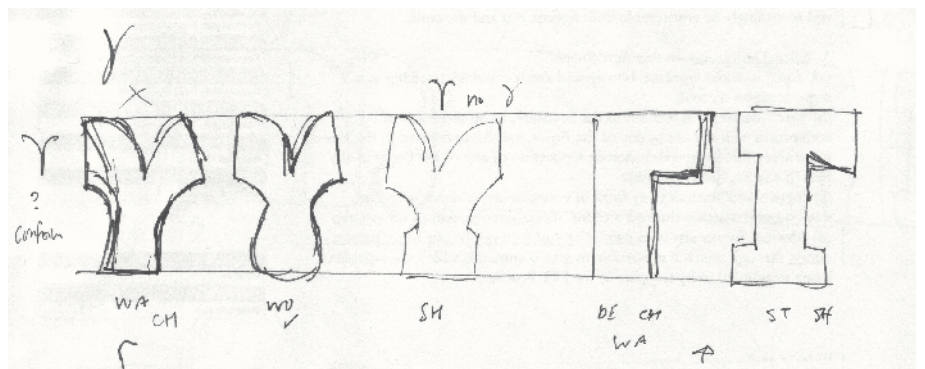
The Shire Types were originally released in 1998 and have been used for many things. Here they are used on a road racing frame made in Italy by Scapin. Repaired and repainted in the UK by Bob Jackson, 2010.



Expanding shires

Toward the end of 2010 I received an enquiry to develop Greek and Cyrillic scripts to complement The Shire Types. This initially seemed at odds with the origins of the design – being based on the vernacular English letter of the 19th century. I had considered adding Greek and Cyrillic in 2008 but then I decided to just expand the Latin. I thought it perhaps a little perverse to have a Greek Staffordshire or a Cyrillic Worcestershire. However, the idea of adding Greek and Cyrillic did make me smile and the types currently are able to set other Latin based languages beyond English.

The history of English lettering abounds with examples of vernacular letter shapes, elements of which found their way into The Shire Types. This research process didn't exist for the Greek and Cyrillic scripts each of which have several letters that are different to Latin ones. Rather the original Shire Types themselves informed the new additions. The Shire Types consist of six varying fonts, giving a great deal of scope for developing a variety of forms.



Greek gamma sketches

Fitting to The Shires

The Greek and Cyrillic characters follow the restricted structure of The Shire Types. There are no ascenders or descenders; all the forms are fitted to the same height.

ALPHABET
ΑΛΦΑΒΗΤΟ
АЛФАВИТ

Bliss Pro all capital setting

ALPHABET
ΑΛΦΑΒΗΤΟ
АЛФАВИТ

As with Latin characters of The Shire Types, the uppercase forms present less of a stylistic issue.

alphabet
αλφάβητο
алфавит

Bliss Pro showing the ascender and descender movement

alphabet
αλφάβητο
алфавит

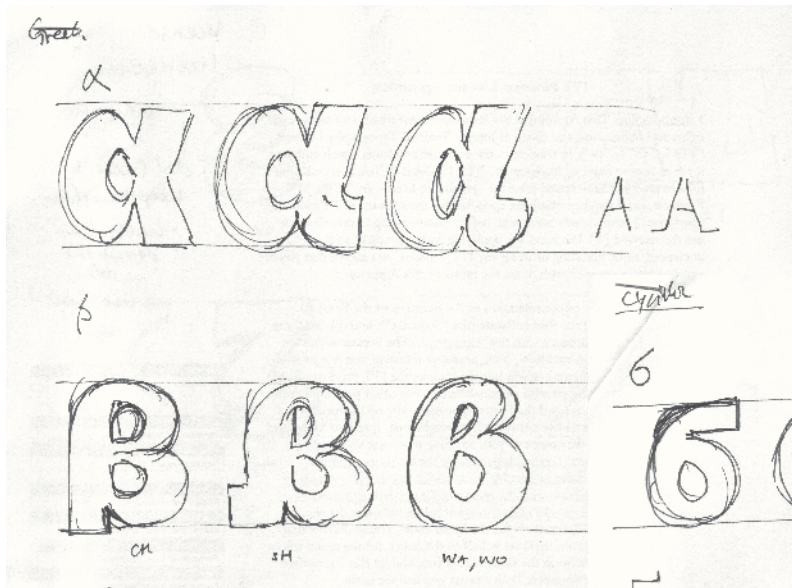
It is in the more lowercase or uncial styled fonts of Cheshire, Shropshire, Warwickshire and Worcestershire that the visual patterning of The Shire Types is evident.

alphabet
αλφάβητο
алфавит

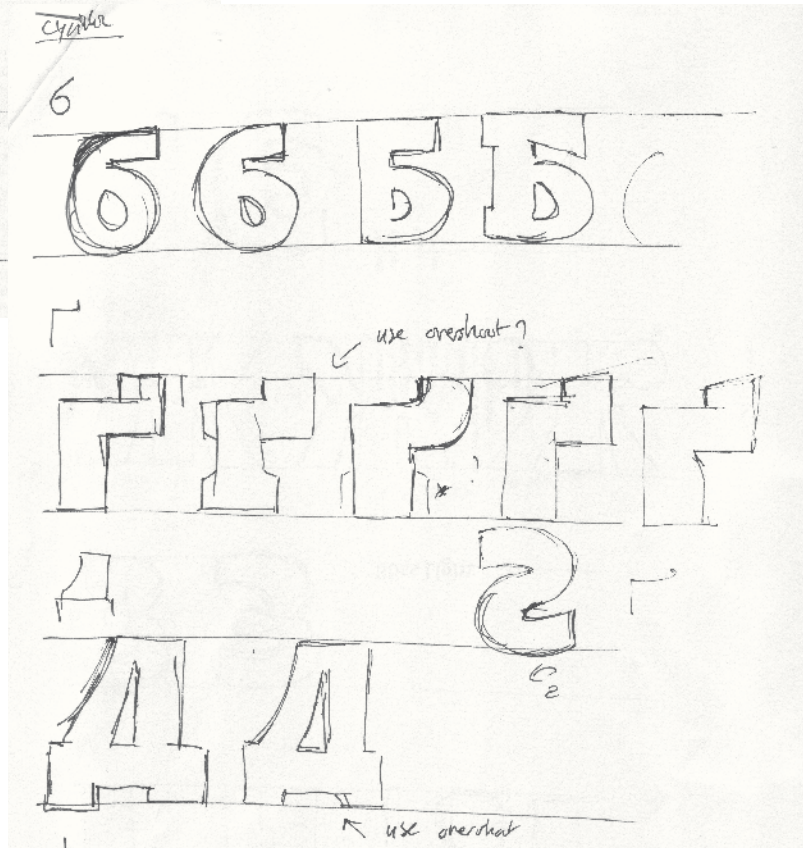
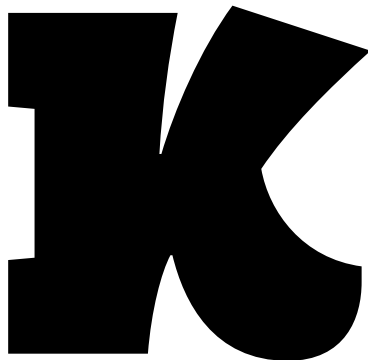
Bliss Pro italic

alphabet
αλφάβητο
алфавит

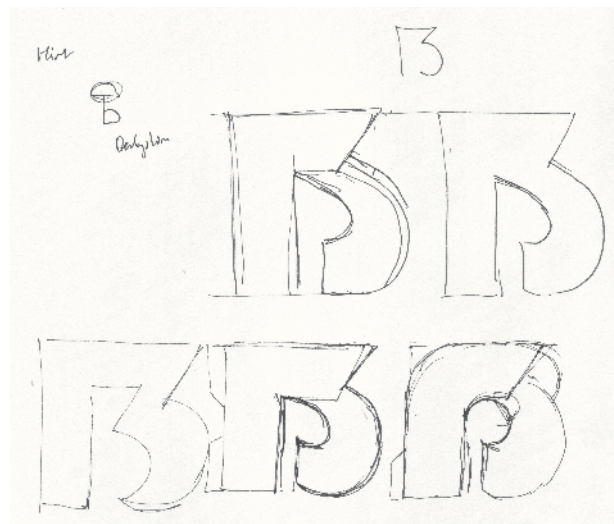
The character sets of Warwickshire and Worcestershire are more cursive in structure, these fonts use the italic Cyrillic forms.



Greek sketches



Cyrillic sketches



German capital eszett

Over recent years there has been a lot of discussion in favour of the need for a capital version of the eszett (ß). Whilst developing Greek and Cyrillic I decided to take the opportunity to include this character. It is in the capital-based fonts of Derbyshire and Staffordshire incase anyone wishes to use them.



Capital eszett